

# MYER'S REPLAT OF BLOCKS 18, 19 & 20, CRAWFORD'S ADDITION, DODGE CITY, FORD COUNTY, KANSAS, AS RE-PLATTED - JANUARY, 1948

## DEDICATION

We, the undersigned, do hereby certify that we are the Owners and proprietors of the following described Tract of land upon which MYER'S REPLAT OF BLOCKS 18, 19 & 20, CRAWFORD'S ADDITION TO DODGE CITY, KANSAS, is located, to wit: Lots 1 and 4 Block 20, all of Block 19 and the west 34.0 feet of Block 18 in CRAWFORD'S ADDITION TO DODGE CITY, KANSAS, (Vacated and Replated by Legal Survey dated January 1948) Except that tract of land described as follows: Beginning at a point on the North line of Block 20, said Crawford's Addition, that is 215.8 feet East of the Northwest corner of said Block (as enlarged by portions of vacated streets on the North and West); thence running East 300.0 feet; thence running South 233.0 feet; thence West 300.0 feet; thence running North 233.0 feet to the place of Beginning

We further certify that all streets, Avenues and Alleys included in this Replat are fully set forth and defined on this plat and are intended to be and are hereby dedicated and/or rededicated to and for public use and purposes as highways.

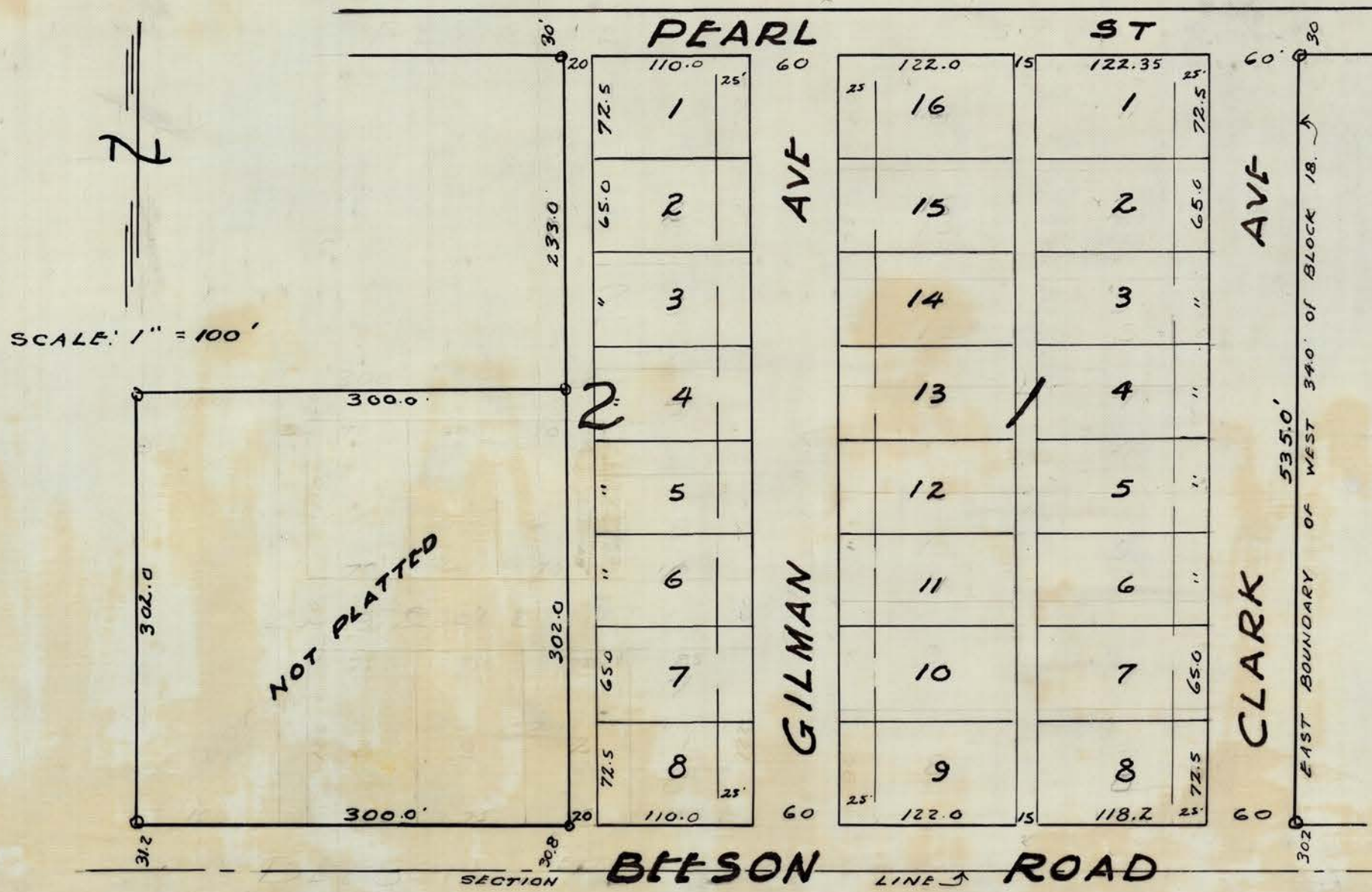
This plat and dedication is subject to certain reservations and restrictions as set forth in a separate instrument, which is filed herewith and is recorded in Book C PAGE 32 1/2 in the office of the Register of Deeds of Ford County, KANSAS

*G. C. Myers*  
G. C. MYERS  
*Wilma L. Myers*  
WILMA L. MYERS

STATE OF KANSAS SS  
COUNTY OF FORD

BE IT REMEMBERED, that on this 25 day of April 1953, A.D., before me, the undersigned, a NOTARY PUBLIC, in and for the State and County aforesaid, came G. C. MYERS and WILMA L. MYERS, who are personally known to me to be the same persons who executed the within instrument and such persons duly acknowledge the execution of same

IN TESTIMONY WHEREOF I have hereunto set my hand and affixed my Notarial Seal the day and year above written.  
MY COMMISSION EXPIRES: Aug. 21, 1954  
*James A. Williams*  
NOTARY PUBLIC



STATE OF KANSAS, ss.  
FORD COUNTY  
This instrument was filed in this office on the 25 day of April, A.D. 1953 at 12 o'clock P.M. and duly Recorded in Book C Page 32 1/2  
Fees \$ 3.00

*Jessie Schoof*  
Register of Deeds

**ENGINEER CERTIFICATE:**

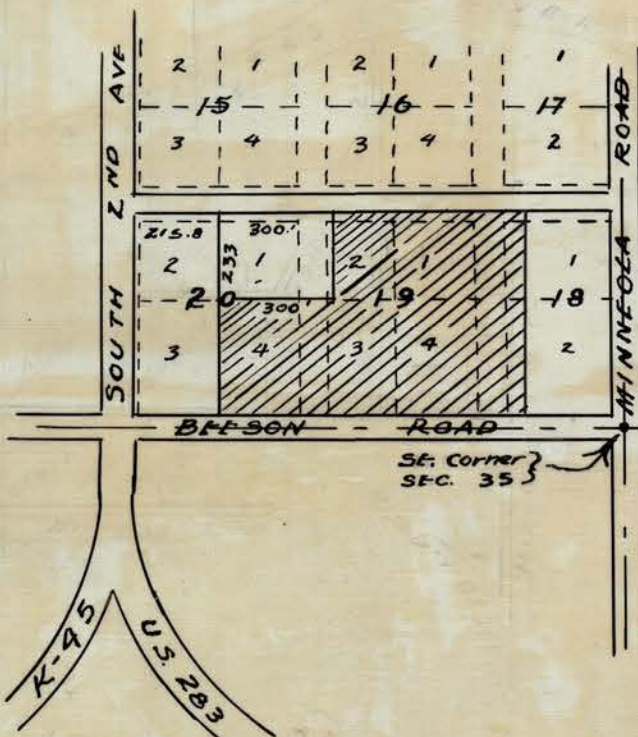
ALL STREETS, AVENUES AND ALLEYS ARE AS SHOWN.

*Chas. H. Swift*  
CHAS. H. SWIFT CO.  
DODGE CITY, KAN.  
4-21-53



APPROVED BY:  
BOARD OF COMMISSIONERS  
DODGE CITY, KANSAS  
THIS 28<sup>th</sup> DAY OF April 1953.

ATTEST:  
*W. E. Smith*  
CITY CLERK  
*B. F. Clinton*  
MAYOR



LOCATION DIAGRAM

**APPROVAL RECOMMENDED:**

CITY PLANNING COMMISSION,  
DODGE CITY, KANSAS.  
THIS 28<sup>th</sup> DAY OF April 1953

ATTEST:  
*Paul Kirkpatrick*  
SECRETARY  
*Delbert R. Moody*  
CHAIRMAN

APPROVED BY:  
BOARD OF COMMISSIONERS,  
FORD COUNTY, KANSAS.  
THIS 28 DAY OF April 1953.

ATTEST:  
*J. C. Young*  
COUNTY CLERK  
*Russell Schaefer*  
CHAIRMAN

