

DEDICATION

STATE OF KANSAS
SS
FORD COUNTY

KNOW ALL MEN BY THESE PRESENTS THAT WE, RALPH W. COCHRAN AND ELGA D. COCHRAN, HUSBAND AND WIFE, OWNERS OF THE LANDS DESCRIBED IN THE ACCOMPANYING ENGINEERS' CERTIFICATE, HAVE CAUSED SAID LANDS TO BE SUBDIVIDED AND PLATTED INTO LOTS, STREETS AND ALLEYS AS SHOWN ON THIS ACCOMPANYING PLAT, THE SAME TO BE KNOWN AS

'COCHRAN REPLAT OF A PART OF TRACTS C AND D, SUNNYSIDE ADDITION'

ALL STREETS AND ALLEYS SHOWN ON SAID PLAT AND NOT NOW PROPERTY OF THE PUBLIC, ARE HEREBY DEDICATED TO AND FOR THE USE OF SAID PUBLIC.

Ralph W. Cochran
RALPH W. COCHRAN
Elga D. Cochran
ELGA D. COCHRAN

ACKNOWLEDGMENT

STATE OF KANSAS
SS
FORD COUNTY

BE IT KNOWN THAT ON THIS 24th DAY OF January, 1963, THERE APPEARED BEFORE ME, A NOTARY PUBLIC IN AND FOR ABOVE SAID COUNTY AND STATE, RALPH W. COCHRAN AND ELGA D. COCHRAN, HUSBAND AND WIFE, KNOWN TO ME TO BE THE PERSONS WHO EXECUTED THE ABOVE INSTRUMENT OF WRITING AND DULY ACKNOWLEDGED TO ME THE EXECUTION OF SAME.

Donna Kline
NOTARY PUBLIC
MY COMMISSION EXPIRES Sept 16, 1966

ENGINEERS' CERTIFICATE

STATE OF KANSAS
SS
FORD COUNTY

BE IT KNOWN THAT I, OLIVER B. WHITTEGAR, A LICENSED PROFESSIONAL ENGINEER IN AND FOR ABOVE SAID COUNTY AND STATE, HAVE SURVEYED THE FOLLOWING DESCRIBED TRACTS OF LAND, BEING PARTS OF TRACTS C AND D OF SUNNYSIDE ADDITION, LOCATED IN THE SOUTH HALF OF SECTION 35, TOWNSHIP 26 SOUTH, RANGE 25 WEST, FORD COUNTY, KANSAS, TO WIT:

BEGINNING AT THE NORTHEAST CORNER OF TRACT C OF SAID SUNNYSIDE ADDITION, THENCE S 0°-24.8' W ALONG THE EAST LINE OF SAID TRACT C, 220 FT.; THENCE N 89°-23.2' W, 198 FT. TO THE WEST LINE THEREOF; THENCE N 0°-24.8' E, 220 FT. TO THE NORTHWEST CORNER THEREOF; THENCE S 89°-23.2' E, ALONG THE NORTH LINE THEREOF, 198 FT. TO THE POINT OF BEGINNING; OTHERWISE DESCRIBED AS THE NORTH ONE ACRE OF TRACT C.

ALSO: BEGINNING AT THE NORTHWEST CORNER OF TRACT D OF SAID SUNNYSIDE ADDITION; THENCE S 0°-24.8' W, ALONG THE WEST LINE OF SAID TRACT D, 220 FT.; THENCE S 89°-23.2' E PARALLEL WITH THE NORTH LINE OF SAID TRACT D 98.9 FT.; THENCE S 45°-42.8' E, 14.17 FT.; THENCE S 0°-24.8' W PARALLEL WITH THE WEST LINE OF SAID TRACT D, 282.37 FT.; THENCE S 89°-23.2' E PARALLEL WITH THE NORTH LINE, 114.82 FT. TO A POINT 10 FT. WEST OF THE EAST LINE OF SAID TRACT D; THENCE N 0°-24.8' E, 512.37 FT. TO A POINT ON THE NORTH LINE OF SAID TRACT D 10 FT. WEST OF THE NORTHEAST CORNER THEREOF; THENCE N 89°-23.2' W, ALONG THE NORTH LINE 223.72 FT. TO THE POINT OF BEGINNING AND BEING PART OF A TRACT OTHERWISE DESCRIBED IN VOLUME 128 OF DEEDS AT PAGE 471

AND THAT I HAVE SUBDIVIDED THE SAME INTO LOTS, STREETS AND ALLEYS AS SHOWN ON THIS ACCOMPANYING PLAT AND THAT SAID PLAT IS A TRUE EXHIBIT OF THE FINDINGS OF SAID SURVEY.

Oliver B. Whittegar
OLIVER B. WHITTEGAR P.E.

RECOMMENDED FOR APPROVAL

BY THE DODGE CITY - FORD COUNTY METROPOLITAN PLANNING COMMISSION

THIS 6th DAY OF FEBRUARY, 1963

CHAIRMAN *Emogene A. Austin* SECRETARY *M.A. Cornwell*

APPROVED

BY THE BOARD OF COMMISSIONERS OF DODGE CITY, KANSAS

THIS 13 DAY OF February, 1963

MAYOR *Frank B. Hooper* CITY CLERK *Maude E. Smith*

APPROVED

BY THE BOARD OF COMMISSIONERS OF FORD COUNTY, KANSAS

THIS 17 DAY OF February, 1963

CHAIRMAN *R.W. Roumfelt* MEMBER *Glenn D. ...*
MEMBER *Gibson ...*

ENTERED ON TRANSFER RECORD

THIS ___ DAY OF ___, 1963

COUNTY CLERK

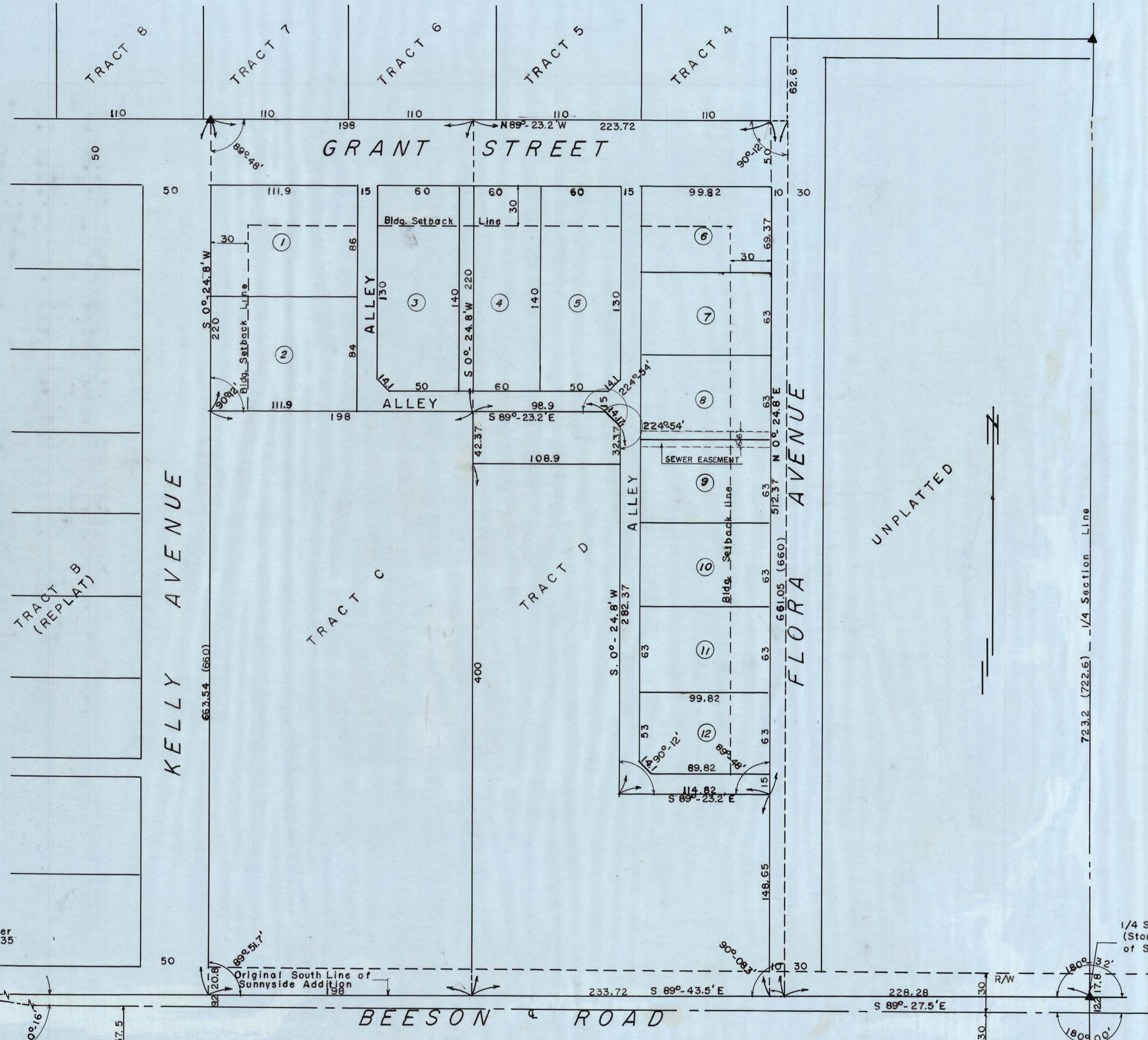
FILED FOR RECORD

THIS 27 DAY OF February, 1963

AT 1:00 O'CLOCK P AND RECORDED

IN BOOK C OF PLATS AT PAGE 52

REGISTER OF DEEDS *Alice M. Rogers*



COCHRAN REPLAT
OF PART OF TRACTS C & D
SUNNYSIDE ADDITION
S 1/2 SECTION 35, TWP. 26 S, RANGE 25 W,
FORD COUNTY, KANSAS

LEGEND
▲ Corners Found in Place
00.0 Measured Distances
(00.0) Original Platted Distances

Scale 1" = 50' (24" X 36")
50 0 50 100

NOTE - Bearings of Lines Referred to the UNITED STATES COAST & GEODETIC SURVEY Triangulation Network. (Station "Dodge")

OLIVER B. WHITTEGAR CONSULTING ENGINEER DODGE CITY, KANSAS

