

CURVE DATA				
CURVE	Δ	R	T	L
A	90°	15	15	23.56
B	90°	15	15	23.56
C	90°	15	15	23.56
D	90°	15	15	23.56
E	81°24'27"	20	17.21	29.84
F	81°24'27"	41	35.27	58.25
G	81°24'27"	20	17.21	29.84
H	81°24'27"	41	35.27	58.25

NOTE :

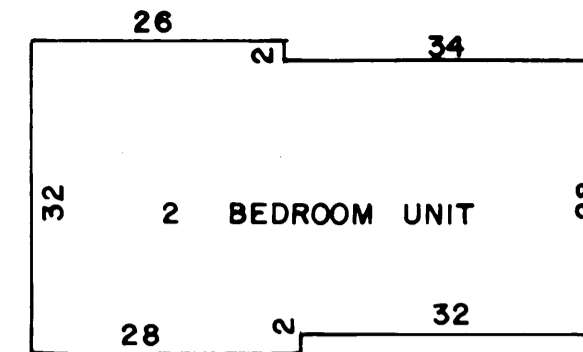
LOTS 7 & 8 ARE TO BE GREEN AREA.

SCALE : 1" = 30'

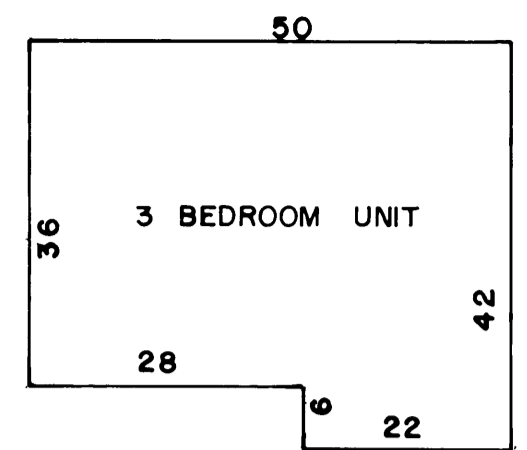
□ = 4" X 4" CONCRETE MONUMENT SET AT CORNER

⊗ = FIRE HYD.

Δ = NO PARKING SIGN



UNIT BB
ALL BB UNIT HAVE SINGLE STORY 3BED-
ROOMS, BASEMENT, AND GARAGE.



UNIT AA
ALL AA UNITS HAVE SINGLE STORY 3BED-
ROOMS, BASEMENT, AND GARAGE.

THIS PLAT OF CRESTVIEW TOWNHOUSES HAS BEEN SUBMITTED TO AND APPROVED BY THE FORD COUNTY REGIONAL PLANNING COMMISSION. THIS THE 13th DAY OF October, 1980.

Tim Wozel
SECRETARY TIM WOZEL

John Colliatie
CHAIRMAN JOHN COLLIATIE

"CRESTVIEW TOWNHOUSES"

DESCRIPTION :

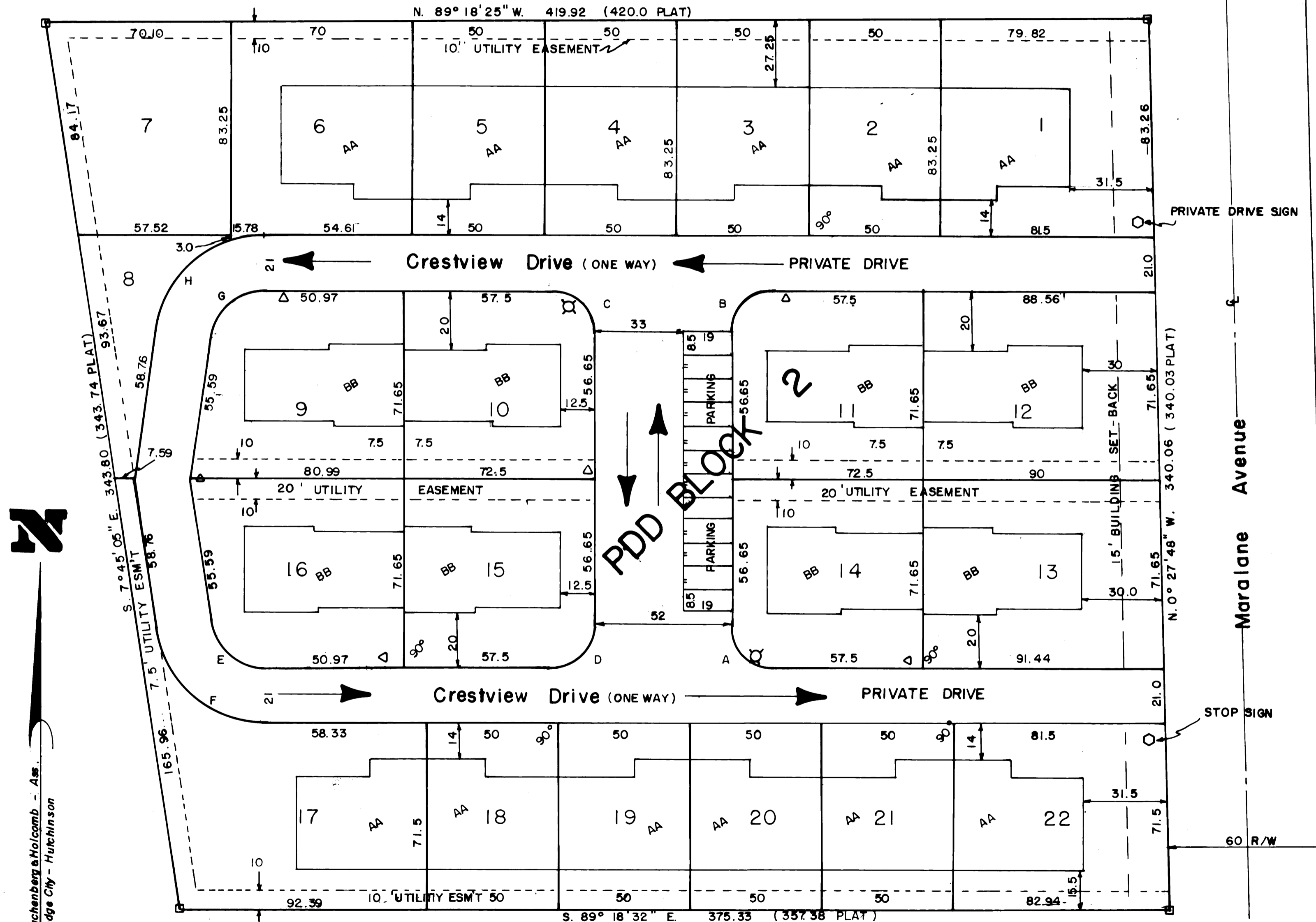
REPLAT OF ALL OF LOTS 22 THROUGH, AND INCLUDING, LOT 29, BLOCK 3, ROSS ADDITION AND SPUR CIRCLE VACATED, ROSS ADDITION, DODGE CITY, KANSAS NOW TO BE DESCRIBED AS LOTS 1 THROUGH 22 INCLUSIVE OF PDD BLOCK 2, CRESTVIEW TOWNHOUSE, DODGE CITY, FORD COUNTY, KANSAS.

I HEREBY CERTIFY THAT THIS DRAWING REPRESENTS AN ACCURATE COPY OF PORTIONS OF THE PLANS OF THE BUILDINGS AS FILED WITH AND APPROVED BY THE CITY OF DODGE CITY.

Steven K. Bachenberg
STEVEN K. BACHENBERG P.E.
DATE: 9/23/80



FORD COUNTY, KANSAS
DATE FILED Oct 29 1980
RECORDED IN PLAT BOOK D, PAGE 116
at 1:30
\$20.00 filing fee *Juanita Dulick*
REGISTER OF DEEDS



Bachenberg & Holcomb - As.
Dodge City - Hutchinson