

RE-PLAT OF BLOCK 20  
 ENTERPRISE ADDITION  
 TO  
 DODGE CITY, KANSAS

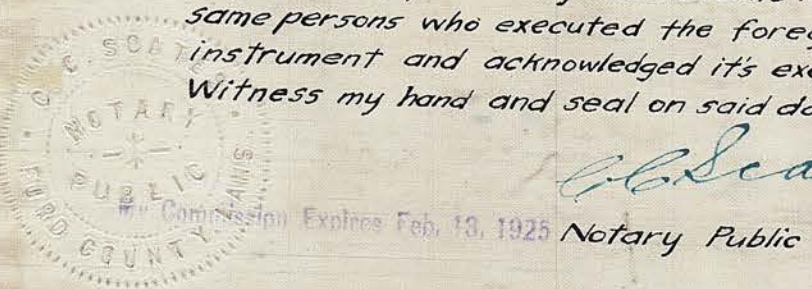
Page 20 1/2

This instrument witnesses that we  
 A.B. Reeves and wife May Reeves, sole owners of  
 Block 20 Enterprise Addition to Dodge City, Kansas  
 do hereby subdivide said block into lots according  
 to the annexed plat, hereby certifying that the  
 dimensions of said lots is shown correctly in feet  
 and 100ths thereof on said plat.  
 Dated this 2<sup>nd</sup> day of January 1922.

*A.B. Reeves*  
*May Reeves*

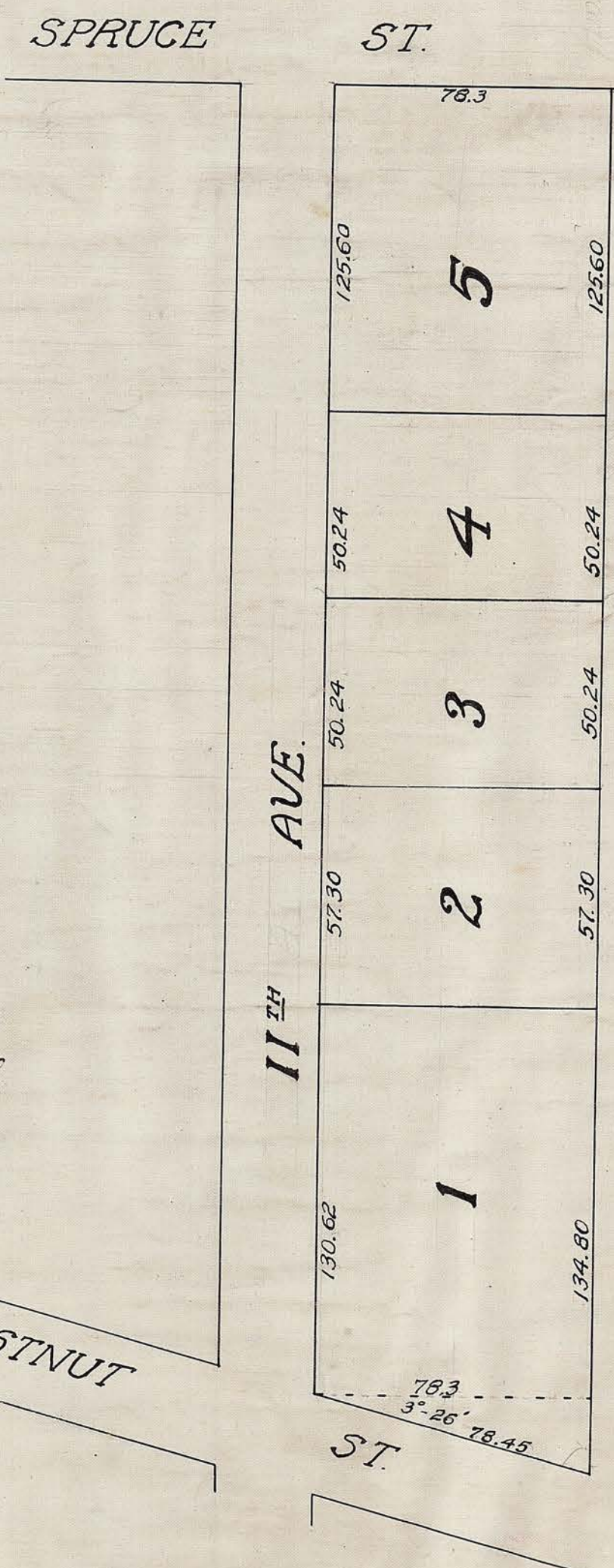
STATE OF KANSAS, FORD COUNTY ss  
 On this 2<sup>nd</sup> day of January 1922  
 personally appeared before me, a notary  
 public in and for said county, A.B. Reeves and  
 May Reeves, personally known to me to be the  
 same persons who executed the foregoing  
 instrument and acknowledged its execution.  
 Witness my hand and seal on said date.

*C. E. Scater*



March 15-1922  
 This plat is hereby ap-  
 proved by the undersigned  
 City Attorney of Dodge City  
 Kansas L. A. Madison

CHESTNUT



STATE OF KANSAS } ss.  
 FORD COUNTY }  
 This instrument was filed in this office  
 on the 15<sup>th</sup> day of March A. D. 1922  
 at 4 o'clock P. M. and duly  
 recorded in book A of \_\_\_\_\_  
 page 20 1/2 Fee \$ 2.00  
*Jeanette Rose*  
 Register of Deeds  
 By \_\_\_\_\_ Deputy

Entered in Transfer Record in my Office  
 this 15 day of March A. D. 1922  
*J. Schell*  
 COUNTY CLERK