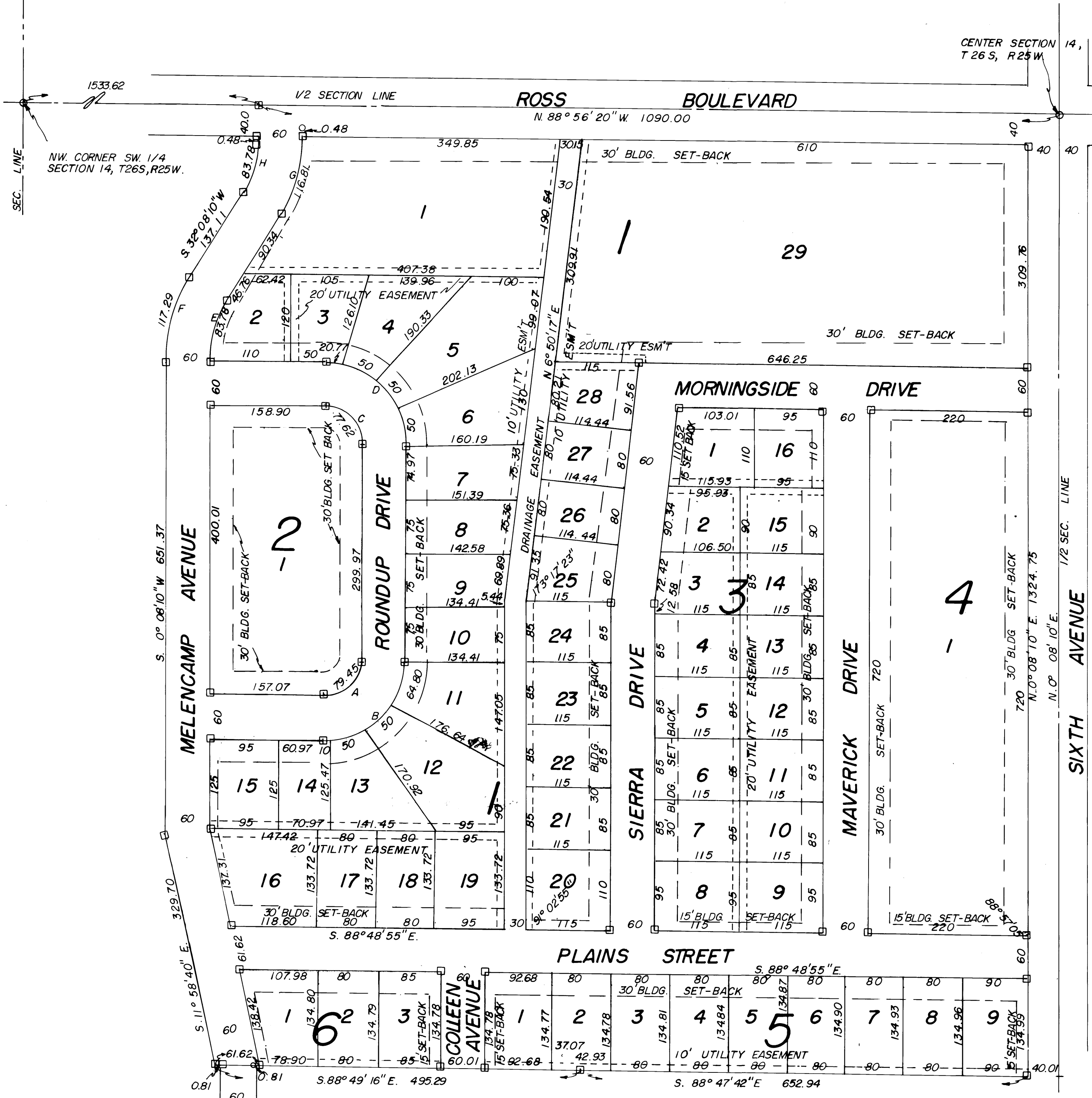


# HARVEST HILLS ADDITION DODGE CITY, KANSAS

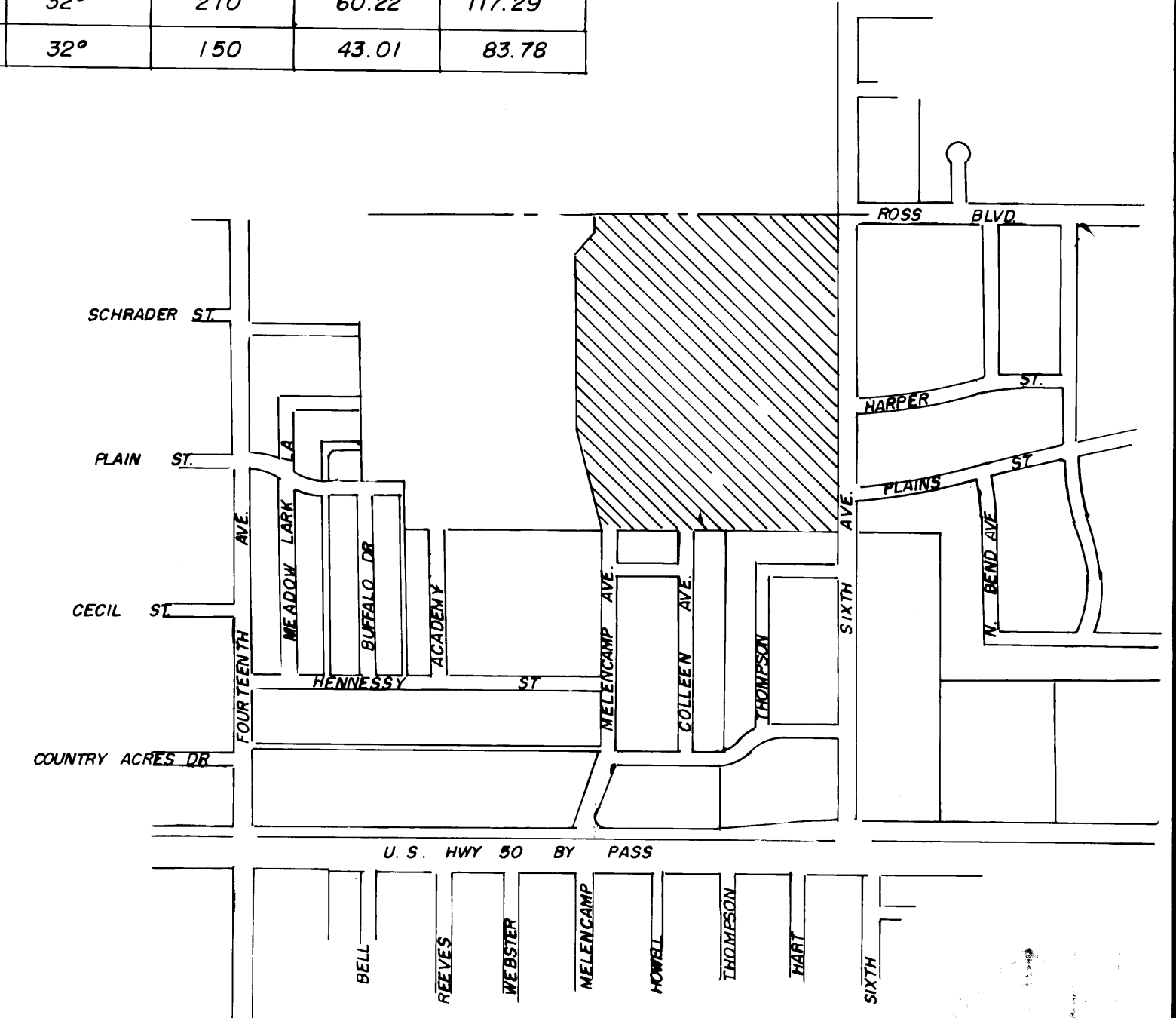
A SUBDIVISION OF PART OF SW. 1/4 SECTION 14, T26S, R25W,  
FORD COUNTY, KANSAS

CURVE DATA

CURVE	Δ	RADIUS	TANGENT	LENGHT
A	91° 02' 55"	50	50.92	79.45
B	91° 02' 55"	110	112.03	174.80
C	88° 57' 05"	50	49.09	77.62
D	88° 57' 05"	110	108.01	170.77
E	32°	150	43.01	83.78
F	32°	210	60.22	117.29
G	32°	210	60.22	117.29
H	32°	150	43.01	83.78



BACHENBERG & HOLCOMB ASSOCIATES  
 DODGE CITY, GARDEN CITY, &  
 HUTCHINSON, KANSAS



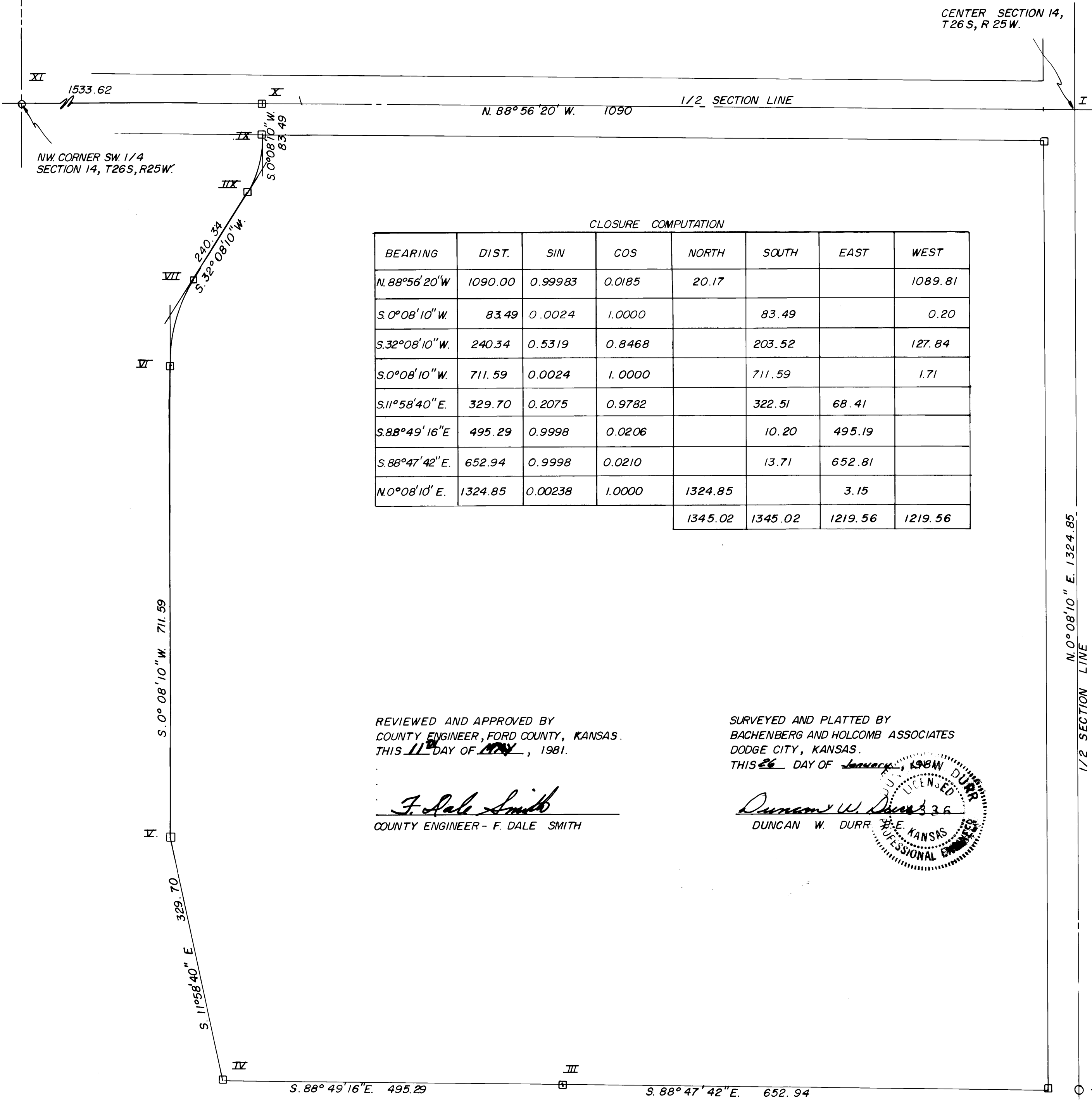
□ = 4" X 4" CONCRETE MONUMENT  
 ○ = IRON PIN  
 SCALE: 1" = 100'

STATE OF KANSAS  
 FORD COUNTY  
 This instrument was filed in this office  
 on the 18th day of May  
 1981 at 10:05 AM  
 and duly recorded in Book 123-125  
 at \_\_\_\_\_ Page 123-125  
*Janita Steinhilber*  
 Register of Deeds



# EXTERIOR BOUNDARY PLAT HARVEST HILLS ADDITION DODGE CITY, KANSAS

A SUBDIVISION OF PART OF SW. 1/4 SECTION 14, T26S, R25W,  
FORD COUNTY, KANSAS



REFERENCES

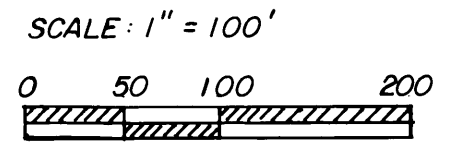
- I. CENTER SECTION 14, T26S, R25W.
  - 1. SPIKE & WASHER AT CORNER
  - 2. SPIKE & WASHER IN POWER POLE
  - 3. SPIKE & WASHER IN POWER POLE
  - 4. TOP OF FIRE HYD.
  - 5. W. EDGE VALLEY GUTTER
- II. SE. CORNER OF SUBDIVISION
  - 1. SPIKE & WASHER AT CORNER
  - 2. E. B/C SIXTH AVENUE
  - 3. W. B/C SIXTH AVENUE
  - 4. TOP OF FIRE HYD.
  - 5. CONC. MONUMENT
  - 6. SPIKE & WASHER IN POWER POLE
- III. NW. COR. HERMAN ADDITION
  - 1. CONC. MONUMENT AT COR.
  - 2. N. FACE OF N. GAS METER PIPE.
  - 3. NE. CORNER OF HOUSE
  - 4. SPIKE & WASHER IN FENCE
- IV. SW. COR. OF SUBDIVISION
  - 1. CONC. MONUMENT AT COR.
  - 2. NW. COR. RET. WALL AT TENNIS COURT
  - 3. SW. COR. RET. WALL AT TENNIS COURT
  - 4. W. B/C ON MELENCAMP AVENUE
- V. WEST P.I. OF SUBDIVISION
  - 1. CONC. MONUMENT
  - 2. NO VISIBLE PERMANENT OBJECTS FOR REFERENCE
- VI. P. C.
  - 1. CONC. MONUMENT
  - 2. NO VISIBLE PERMANENT OBJECT
- VII. P. T.
  - 1. CONC. MONUMENT
  - 2. NO VISIBLE PERMANENT OBJECTS FOR REFERENCE
- VIII. P. C.
  - 1. CONC. MONUMENT
  - 2. NO VISIBLE PERMANENT OBJECTS FOR REFERENCE
- IX. P. T.
  - 1. CONC. MONUMENT
  - 2. NO VISIBLE PERMANENT OBJECTS FOR REFERENCE
- X. NW. CORNER OF SUBDIVISION
  - 1. CONC. MONUMENT
  - 2. NO VISIBLE PERMANENT OBJECTS FOR REFERENCE
- XI. NW. COR. SW. 1/4 SEC. 14, T26S, R25W.
  - 1. RAILROAD SPIKE AT CORNER
  - 2. SPIKE & WASHER IN POWER POLE
  - 3. SPIKE & WASHER IN POWER POLE
  - 4. IRON PIPE (2' DEEP)
  - 5. W. B/C 14TH. AVE.
  - 6. SPIKE & WASHER IN POWER POLE
  - 7. E. B/C 14TH. AVE.

REVIEWED AND APPROVED BY  
COUNTY ENGINEER, FORD COUNTY, KANSAS.  
THIS 11 DAY OF NOV, 1981.

*F. Dale Smith*  
COUNTY ENGINEER - F. DALE SMITH

SURVEYED AND PLATTED BY  
BACHENBERG AND HOLCOMB ASSOCIATES  
DODGE CITY, KANSAS.

THIS 26 DAY OF January, 1981  
*Duncan W. Durr*  
DUNCAN W. DURR  
LICENSED PROFESSIONAL ENGINEER  
STATE OF KANSAS



STATE OF KANSAS  
FORD COUNTY  
This instrument was filed  
on the 18 day of Nov  
1981 and duly recorded  
at 123-125  
*Franka Schick*