

HY-PLAINS SHOPPING CENTER

DODGE CITY, KANSAS

A TRACT OF LAND IN THE SOUTHEAST QUARTER SECTION 22, T. 26 S., R. 25 W., INCLUDING REPLAT OF LOTS 2, 3, 4 & 5 KIRBY ADDITION, FORD COUNTY, KANSAS MORE PARTICULARLY DESCRIBED AS FOLLOWS:

DEDICATION:
 WE THE UNDERSIGNED DO HEREBY CERTIFY THAT WE ARE THE OWNERS AND PROPRIETORS OF THE FOLLOWING DESCRIBED TRACT OF LAND UPON WHICH HY-PLAINS SHOPPING CENTER, A SUBDIVISION THEREOF, IS LOCATED TO WIT: COMMENCING AT THE NORTHEAST CORNER OF THE SOUTHEAST QUARTER OF SECTION 22, TOWNSHIP 26 SOUTH, RANGE 25 WEST, FORD COUNTY, KANSAS; THENCE SOUTH 89°16'40" WEST ALONG THE NORTH BOUNDARY LINE OF THE SOUTHEAST QUARTER OF SAID SECTION 22 FOR 246.21 FEET TO A POINT OF BEGINNING, SAID POINT BEING THE NORTHWEST CORNER OF LOT 1, BLOCK 2, KIRBY ADDITION; THENCE SOUTH 1°30'20" EAST ALONG THE WEST BOUNDARY LINE OF LOT 1, BLOCK 2, KIRBY ADDITION FOR 208.71 FEET; THENCE NORTH 89°16'40" EAST FOR 196.21 FEET; THENCE SOUTH 1°30'20" EAST FOR 834.8 FEET, ALONG THE WEST RIGHT OF WAY OF FOURTEENTH AVENUE, TO THE SOUTHEAST CORNER LOT 5, BLOCK 2, KIRBY ADDITION; THENCE SOUTH 89°16'40" WEST PARALLEL WITH THE NORTH BOUNDARY LINE OF THE SOUTHEAST QUARTER OF SAID SECTION 22, FOR 711.21 FEET; THENCE NORTH 1°30'20" WEST PARALLEL WITH THE WEST BOUNDARY LINE OF SAID BLOCK 2, KIRBY ADDITION FOR 488.51 FEET; THENCE SOUTH 89°16'40" WEST PARALLEL WITH THE NORTH BOUNDARY LINE OF THE SOUTHEAST QUARTER OF SAID SECTION 22 FOR 115.0 FEET; THENCE NORTH 1°30'20" WEST PARALLEL WITH THE WEST BOUNDARY LINE OF SAID BLOCK 2, KIRBY ADDITION FOR 555.0 FEET TO A POINT ON THE NORTH BOUNDARY LINE OF THE SOUTHEAST QUARTER OF SAID SECTION 22; THENCE NORTH 89°16'40" EAST ALONG THE NORTH BOUNDARY LINE OF THE SOUTHEAST QUARTER OF SAID SECTION 22 FOR 630.0 FEET TO THE POINT OF BEGINNING. WE FURTHER CERTIFY THAT ALL STREET, AVENUES, ALLEYS, AND EASEMENTS INCLUDED IN THIS SUBDIVISION ARE FULLY SET FORTH AND DEFINED IN THE ACCOMPANYING PLAT AND ARE INTENDED TO BE AND ARE HEREBY DEDICATED AND/OR REDEDICATED TO THE PUBLIC FOR PUBLIC USE.

Bill Kirby BILL KIRBY
Virginia Kirby VIRGINIA KIRBY
Carthel E. McCollough CARTHTEL E. MCCOLLOUGH
Wilma Jean McCollough WILMA JEAN MCCOLLOUGH

STATE OF KANSAS SS
 COUNTY OF FORD
 BE IT REMEMBERED THAT ON THIS 15 DAY OF July, 1980, BEFORE ME, A NOTARY PUBLIC IN AND FOR SAID COUNTY AND STATE, CAME BILL KIRBY AND VIRGINIA KIRBY, HIS WIFE, CARTHTEL E. MCCOLLOUGH AND WILMA JEAN MCCOLLOUGH, HIS WIFE, TO ME PERSONALLY KNOWN TO BE THE SAME PERSONS WHO EXECUTED THE FOREGOING INSTRUMENT OF WRITING, AND DULY ACKNOWLEDGED THE EXECUTION OF THE SAME, IN TESTIMONY WHEREOF, I HAVE HEREUNTO SET MY HAND AFFIXED MY NOTARIAL SEAL THE DAY AND YEAR ABOVE WRITTEN. MY COMMISSION EXPIRES: May 27, 1981 NOTARY PUBLIC *Sumner Meyer*

STATE OF KANSAS SS
 COUNTY OF FORD
 FRONTIER FEDERAL SAVINGS & LOAN ASSOCIATION
 BY: *Kirk H. Schrieder* KIRK H. SCHRIEDER
 BE IT REMEMBERED THAT ON THIS 4th DAY OF AUGUST, 1980, BEFORE ME, A NOTARY PUBLIC IN AND FOR SAID COUNTY AND STATE, CAME KIRK H. SCHRIEDER TO ME PERSONALLY KNOWN TO BE THE SAME PERSON WHO EXECUTED THE FOREGOING INSTRUMENT OF WRITING, AND DULY ACKNOWLEDGED THE EXECUTION OF THE SAME, IN TESTIMONY WHEREOF, I HAVE HEREUNTO SET MY HAND AFFIXED MY NOTARIAL SEAL THE DAY AND YEAR ABOVE WRITTEN. MY COMMISSION EXPIRES: Jan 31, 1982 NOTARY PUBLIC *Alice M. Neidhart*

I STEVEN K. BACHENBERG, LICENSED PROFESSIONAL ENGINEER IN STATE OF KANSAS, HEREBY CERTIFY THAT I HAVE ACCURATELY SURVEYED AND PLATTED HY-PLAINS SHOPPING CENTER AND THAT THE BOUNDARY CORNERS AND CONTROL POINTS HAVE BEEN SET AS REQUIRED BY ORDINANCE.
 DATE: July 15, 1980 BACHENBERG & HOLCOMB ASS. DODGE CITY, KANSAS
 BY: *Steven K. Bachenberg* STEVEN K. BACHENBERG PRESIDENT P.E.

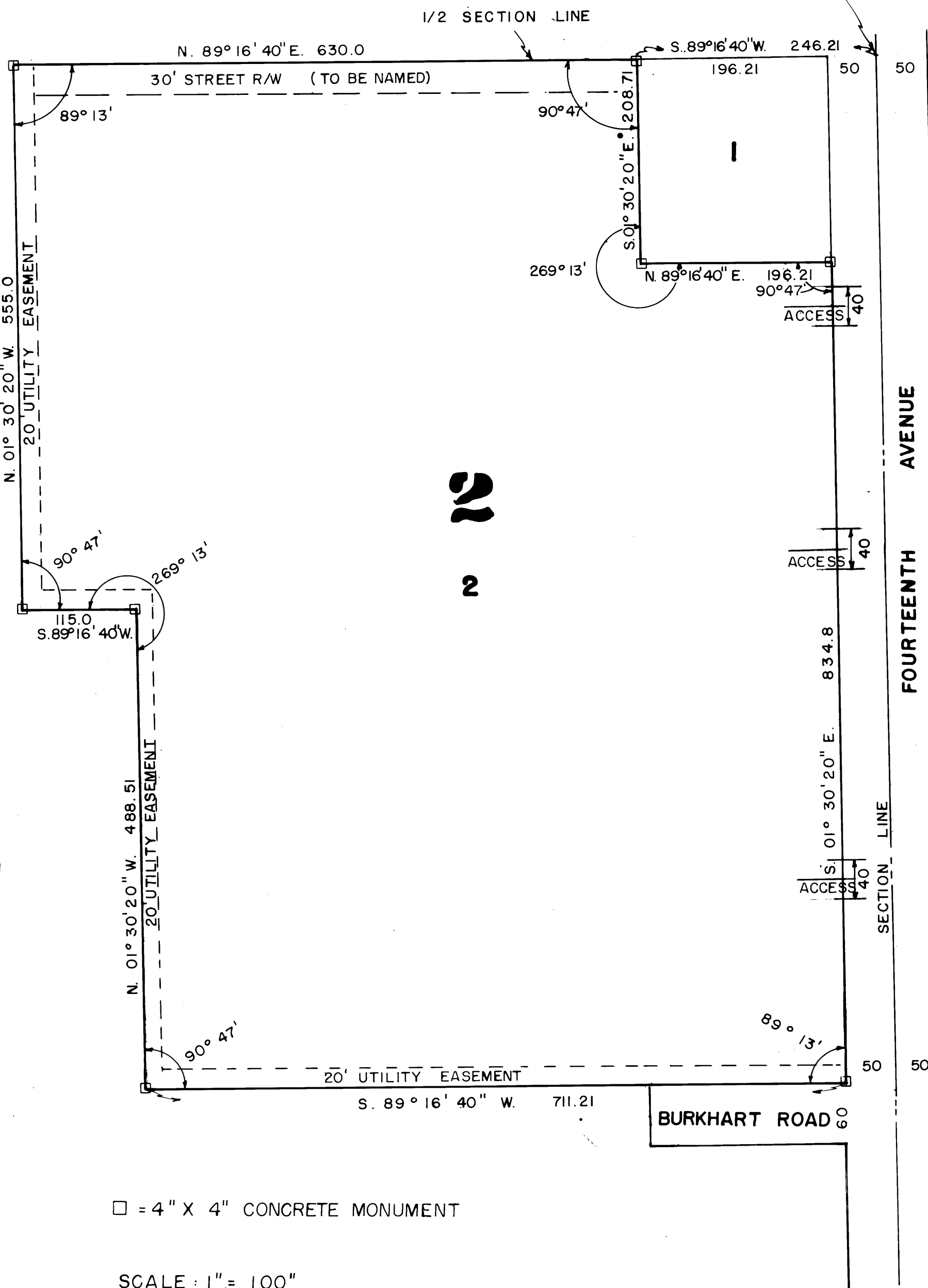
THIS PLAT OF HY-PLAINS SHOPPING CENTER HAS BEEN SUBMITTED TO AND APPROVED BY THE FORD COUNTY REGIONAL PLANNING COMMISSION. THIS THE 11th DAY OF AUGUST, 1980.
 SECRETARY: *Tim Wenzl* TIM WENZL
 CHAIRMAN: *John Colliatie* JOHN COLLIATIE
 THE DEDICATION SHOWN ON THIS PLAT ACCEPTED BY THE BOARD OF COMMISSIONERS OF FORD COUNTY, KANSAS. THIS THE 11th DAY OF AUGUST, 1980.
 COMMISSIONER: *Vern Birney* VERN BIRNEY
 CHAIRMAN: *Edward O. Gibb* EDWARD O. GIBB
 COMMISSIONER: *Wilbur Underwood* WILBUR UNDERWOOD
 ATTEST: *Lucille Keck* LUCILLE KECK
 COUNTY CLERK: LUCILLE KECK

THE DEDICATIONS SHOWN ON THIS PLAT ACCEPTED BY BOARD OF CITY COMMISSIONERS OF THE CITY OF DODGE CITY, KANSAS. THIS THE 11th DAY OF AUGUST, 1980.
 MAYOR: *Robert J. Coffin* ROBERT J. COFFIN
 ATTEST: *Ron Thornburg* RON THORNBURG
 CITY CLERK: RON THORNBURG

STATE OF KANSAS SS
 COUNTY OF FORD
 THIS IS TO CERTIFY THAT THIS INSTRUMENT WAS FILED FOR RECORD IN THE REGISTER OF DEEDS OFFICE ON THE 12 DAY OF Aug, 1980. at 4:05 P.M.
 IN BOOK D, PAGE 111-112
 * 20.00 filing fee
 REGISTER OF DEEDS: *Juanita Gulick* JUANITA GULICK

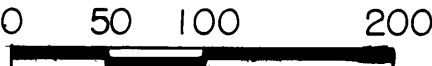
NOTE:
 ORDINANCE NO. _____ RESTRICTS ENTRANCE ON FOURTEENTH AVENUE TO THE LOCATIONS SHOWN AS "ACCESS" ON THIS DRAWING.
 ENTERED ON TRANSFER RECORDS THIS 12 DAY OF Aug, 1980.
 COUNTY CLERK: *Lucille Keck* LUCILLE KECK

NE. COR. SE. 1/4
 SECTION 22,
 T. 26 S., R. 25 W

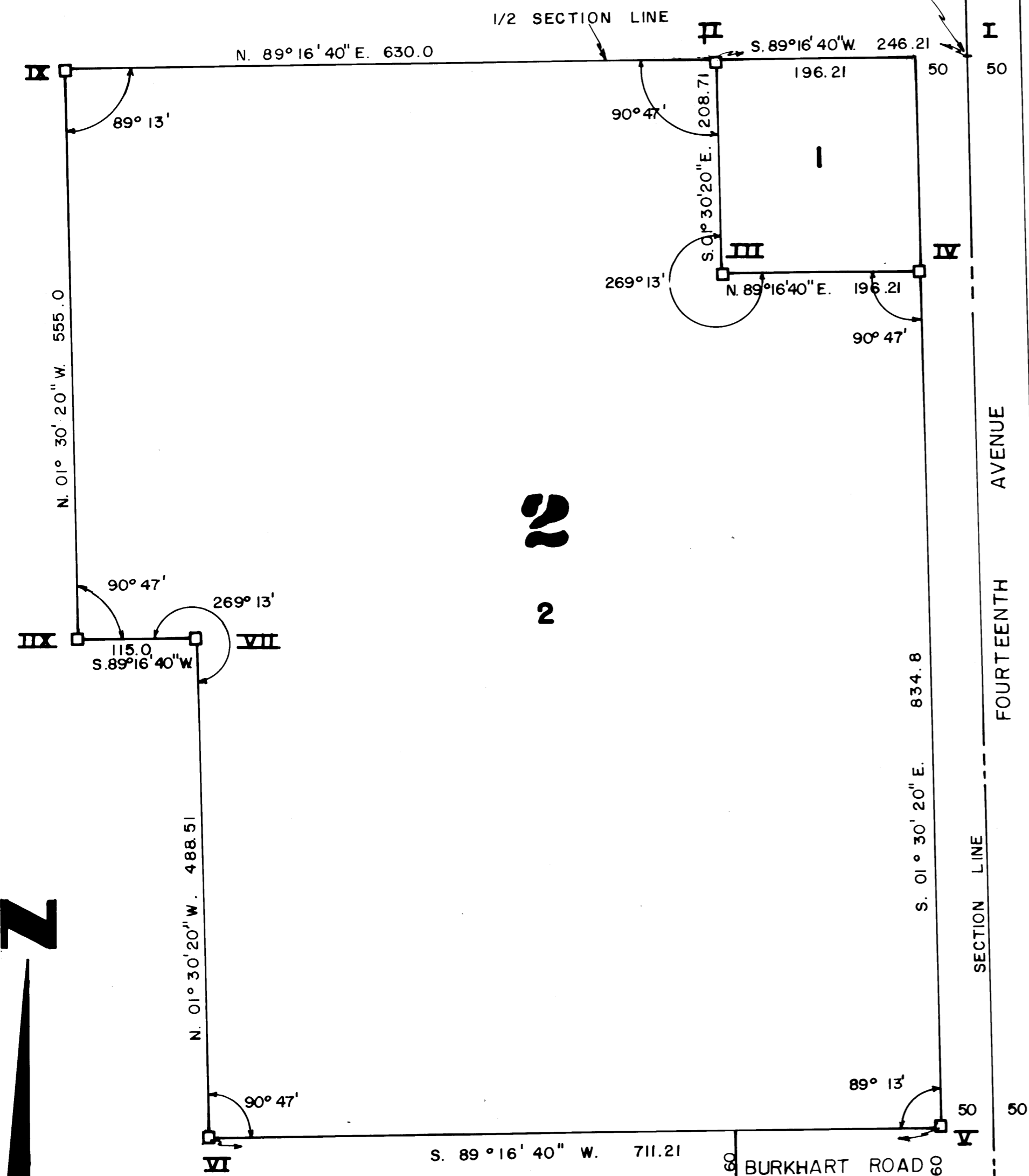


□ = 4" X 4" CONCRETE MONUMENT

SCALE: 1" = 100'



NE. COR. SE. 1/4
SECTION 22,
T26S, R25W.



□ = 4" X 4" CONCRETE MONUMENT

SCALE: 1" = 100'

0 50 100 200

EXTERIOR BOUNDARY PLAT HY-PLAINS SHOPPING CENTER

DODGE CITY, KANSAS

A TRACT OF LAND IN THE SOUTHEAST QUARTER SECTION 22, T. 26 S., R25W., INCLUDING
REPLAT OF LOTS 2,3,4 & 5 KIRBY ADDITION, FORD COUNTY, KANSAS

STATE OF KANSAS)
FORD COUNTY)
This instrument was filed in the office
of the Register of Deeds on the 12 day of August
1980 at 4:05 P.M.
and duly recorded in Book 0
at Page 111-112
Juanita Gulick
Register of Deeds

REFERENCES TO CORNERS:

- I. NE. COR. SE. 1/4, SEC. 22, T26S, R25W.
1. R.R. SPIKE ON SECTION LINE.
2. BACK OF CURB. 26.5' W.
3. BACK OF CURB. 26.5' E.
4. SPK. & WSHR. IN POWER POLE. 58.5' SE.
5. SPK. & WSHR. IN TELE. POLE. 59.1' NW.
- II. NNE. COR. OF SUBDIVISION
1. 4" X 4" CONCRETE MONUMENT. 1.6' W.
2. FENCE COR. POST. 2.2' S.
3. FENCE COR. POST. 6.9' N-NE.
4. C OF POPLAR TREE. 24.2' E-NE.
5. C OF POPLAR TREE.
- III.
1. 1/2" IRON PIN AT COR.
2. WATER HYD. AT GROUND. 42.9' NE.
3. N-S FENCE DIRECTLY OVER PIN.
4. FENCE COR. POST. 20' S.
- IV. NE. COR. OF SUBDIVISION
1. 1/2" IRON PIN AT CORNER
2. BACK OF CURB 23.75' E.
3. FENCE WEST 2.85' S.
4. FENCE SOUTH 6.5' W.
- V. SOUTHEAST COR. OF SUBDIVISION
1. 4" X 4" CONCRETE MONUMENT AT COR.
2. BACK OF CURB 23.75' E.
3. NE. COR. CONC. INLET (AT FACE OF CURB) 36.9' SE.
- VI.
1. 4" X 4" CONCRETE MONUMENT AT COR.
2. NO VISIBLE PERMANENT OBJECTS TO REFERENCE.
- VII.
1. 4" X 4" CONCRETE MONUMENT AT COR.
2. NO VISIBLE PERMANENT OBJECTS TO REFERENCE.
- VIII.
1. 4" X 4" CONCRETE MONUMENT AT COR.
2. NO VISIBLE PERMANENT OBJECTS TO REFERENCE.
- IX. NW. CORNER OF SUBDIVISION
1. 4" X 4" CONCRETE MONUMENT AT COR.
2. NO VISIBLE PERMANENT OBJECTS TO REFERENCE.

CLOSURE COMPUTATION

BEARING	DIS.	SIN	COS.	NORTH	SOUTH	EAST	WEST
S.01°30'20" E.	208.71	.03199	.99948		208.60	6.67	
N.89°16'40" E.	196.21	.99999	.00116	0.22		196.20	
S.01°30'20" E.	834.80	.03199	.99948		834.36	26.70	
S.89°16'40" W.	711.21	.99999	.00116		0.82		711.20
N.01°30'20" W.	488.51	.03199	.99948	488.25			15.62
S.89°16'40" W.	115.00	.99999	.00116		0.13		114.99
N.01°30'40" W.	555.00	.03199	.99948	554.71			17.75
N.89°16'40" E.	630.00	.99999	.00116	0.73		629.99	
				1043.91	1043.91	859.56	859.56

REVIEWED AND APPROVED BY
COUNTY ENGINEER FORD COUNTY, KANSAS
THIS THE 11, DAY OF AUG., 1980

F. Dale Smith
F. DALE SMITH
COUNTY ENGINEER

SURVEY AND PLAT BY
BACHENBERG & HOLCOMB ASS.
DODGE CITY, KANSAS THIS THE
15th, DAY OF July, 1980.

Steven K. Bachenberg
STEVEN K. BACHENBERG P.E.

