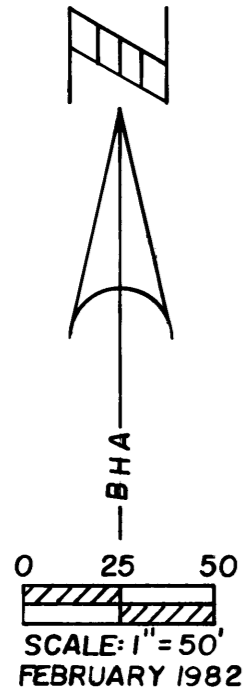
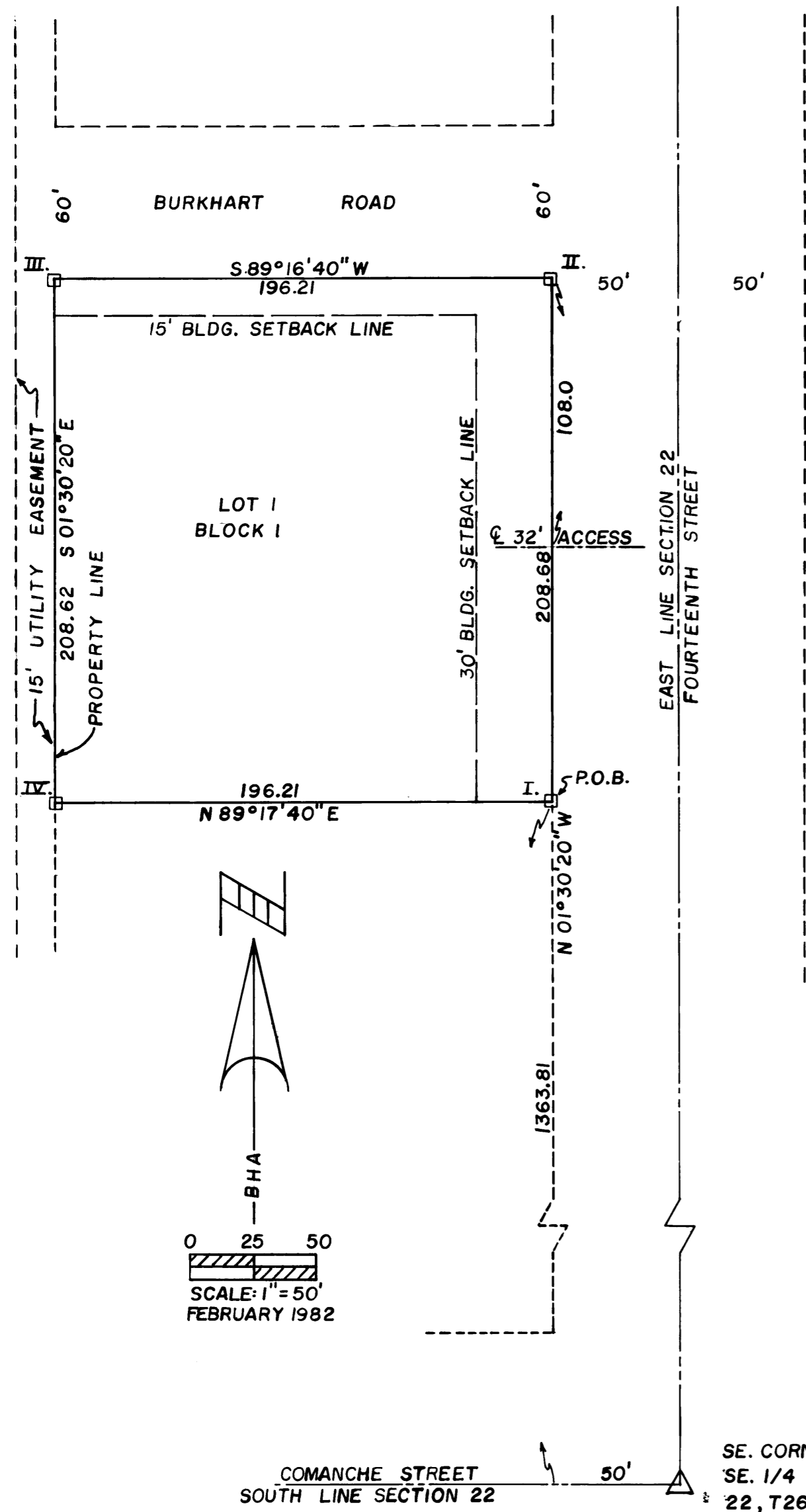


REPLAT OF LOT 1, BLOCK 1, KIRBY ADDITION DODGE CITY, KANSAS

LOCATED IN THE SE 1/4 SECTION 22-T26S-R25W



DEDICATION:
WE, THE UNDERSIGNED, DO HEREBY CERTIFY THAT WE ARE THE OWNERS AND PROPRIETORS OF THE FOLLOWING DESCRIBED TRACT OF LAND UPON WHICH LOT 1, BLOCK 1, KIRBY ADDITION REPLAT, IS LOCATED TO WIT:

COMMENCING AT THE SOUTHEAST CORNER OF THE SOUTHEAST QUARTER OF SECTION 22, TOWNSHIP 26 SOUTH, RANGE 25 WEST, FORD COUNTY, KANSAS; THENCE SOUTH 89°17'40" WEST ALONG THE SOUTH BOUNDARY LINE OF THE SOUTHEAST QUARTER OF SAID SECTION 22 FOR 50.0 FEET; THENCE NORTH 01°30'20" WEST PARALLEL WITH AND 50.0 FEET WEST OF THE EAST BOUNDARY LINE OF THE SOUTHEAST QUARTER OF SAID SECTION 22 FOR 1363.81 FEET TO THE POINT OF BEGINNING; THENCE CONTINUING NORTH 01°30'20" WEST PARALLEL WITH AND 50.0 FEET WEST OF THE EAST BOUNDARY LINE OF THE SOUTHEAST QUARTER OF SAID SECTION 22 FOR 208.68 FEET; THENCE SOUTH 89°16'40" WEST FOR 196.21 FEET; THENCE SOUTH 01°30'20" EAST FOR 208.62 FEET; THENCE NORTH 89°17'40" EAST FOR 196.21 FEET TO THE POINT OF BEGINNING.

WE FURTHER CERTIFY THAT ALL STREETS, ALLEYS, EASEMENTS, AND AVENUES INCLUDED IN THIS PLAT ARE HEREBY DEDICATED AND OR REDEDICATED TO THE PUBLIC FOR PUBLIC USE.

Fred C. Casterline
FRED C. CASTERLINE

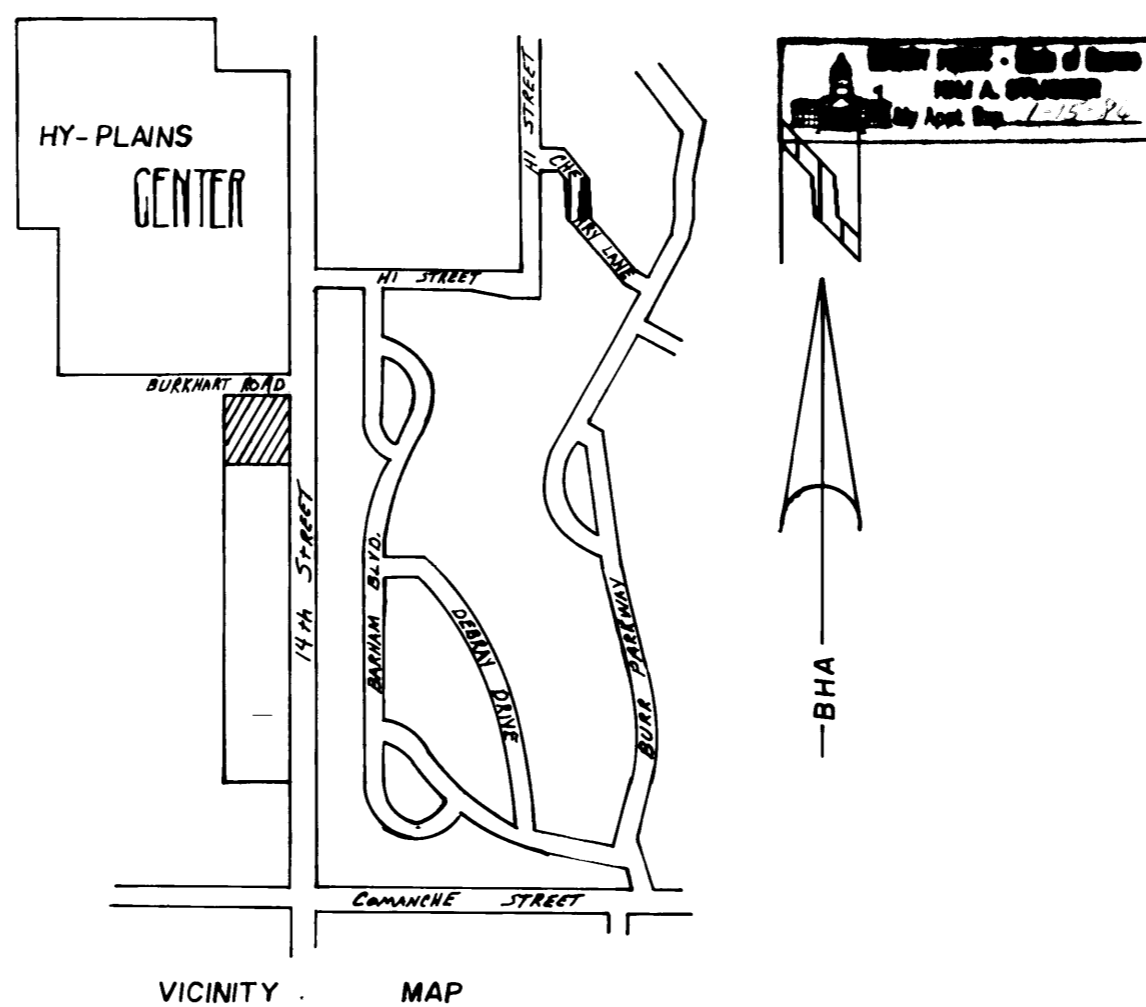
Harold Ottaway
THE OTTAWAY FAMILY PARTNERSHIP
HAROLD OTTAWAY

Jack W. Shultz
GRACE BIBLE CHURCH OF DODGE CITY INC.
JACK W. SHULTZ, SECRETARY

STATE OF KANSAS SS
COUNTY OF FORD

BE IT REMEMBERED THAT ON THIS 8th DAY OF February, 1982, BEFORE ME, A NOTARY IN AND FOR SAID COUNTY AND STATE, CAME FRED C. CASTERLINE, HAROLD OTTAWAY, AND JACK W. SHULTZ, TO ME PERSONALLY KNOWN TO BE THE SAME PERSONS WHO EXECUTED THE FOREGOING INSTRUMENT OF WRITING, AND DULY ACKNOWLEDGE THE EXECUTION OF SAME, IN TESTIMONY WHEREOF, I HAVE HEREUNTO SET MY HAND AND AFFIXED MY NOTARIAL SEAL THE DAY AND YEAR ABOVE WRITTEN.

MY COMMISSION EXPIRES: 1-15-84 NOTARY PUBLIC: *Jim J. Stuber*



THIS REPLAT OF LOT 1, BLOCK 1, KIRBY ADDITION HAS BEEN SUBMITTED TO AND APPROVED BY FORD COUNTY REGIONAL PLANNING COMMISSION, THIS 22nd DAY OF February, 1982

Paul D. Chaffee
SECRETARY: PAUL D. CHAFFEE

Gregory B. Starks
CHAIRMAN: GREGORY B. STARKS

THE DEDICATION SHOWN ON THIS PLAT ACCEPTED BY THE BOARD OF COMMISSIONERS OF FORD COUNTY, FORD COUNTY, KANSAS. THIS 22 DAY OF Mar. 1982.

Vern Birney
COMMISSIONER: VERN BIRNEY

Edward O. Gibb
CHAIRMAN: EDWARD O. GIBB

Wilbur Underwood
COMMISSIONER: WILBUR UNDERWOOD

Lucille Keck
COUNTY CLERK: LUCILLE KECK

THE DEDICATION SHOWN ON THIS PLAT ACCEPTED BY THE BOARD OF CITY COMMISSIONERS OF DODGE CITY, KANSAS. THIS 15th DAY OF MAR, 1982

Hi Bland
MAYOR: HI BLAND

Ron Thornburg
CITY CLERK: RON THORNBURG

STATE OF KANSAS SS
COUNTY OF FORD

THIS IS TO CERTIFY THAT THIS INSTRUMENT WAS FILED FOR RECORD IN THE REGISTER OF DEEDS OFFICE ON THE 22 DAY OF March 1982, IN BOOK D PAGE 135, at 4:50 P.M.

\$ 20.00 Filing fee

REGISTER OF DEEDS: JUANITA GULICK *Juanita Gulick*

ENTER ON TRANSFER RECORD THIS 22 DAY OF Mar. 1982.

Lucille Keck
COUNTY CLERK: LUCILLE KECK

I DUNCAN W. DURR, A LICENSED PROFESSIONAL ENGINEER IN THE STATE OF KANSAS, HEREBY CERTIFY THAT I HAVE ACCURATELY SURVEYED AND REPLATTED LOT 1, BLOCK 1, KIRBY ADDITION AND THAT THE BOUNDARY CORNERS AND CONTROL POINTS HAVE BEEN SET AS REQUIRED BY ORDINANCE.

BACHENBERG & HOLCOMB ASSOCIATES
DODGE CITY, KANSAS

Duncan W. Durr
DUNCAN W. DURR

REVIEWED AND APPROVED BY COUNTY ENGINEER FORD COUNTY, KANSAS, THIS 22nd DAY OF MAR, 1982

F. Dale Smith
COUNTY ENGINEER: F. DALE SMITH

		CLOSURE		COMPUTATIONS			
BEARING	DIST.	SIN	COS	NORTH	SOUTH	EAST	WEST
N01°30'20"W	208.68	0.0263	0.9997	208.61			5.48
S89°16'40"W	196.21	0.9999	0.0126		2.47		196.19
S01°30'20"E	208.62	0.0263	0.9997		208.55	5.48	
N89°17'40"E	196.21	0.9999	0.0123	2.41			196.19
TOTALS	809.72			211.02	211.02	201.67	201.67

- REFERENCES:
- I. SE CORNER
 - 1. 4" X 4" CONCRETE MONUMENT
 - 2. NORTH PIPE OF GAS METER 2.40 SE
 - 3. BACK OF CURB 23.53 E
 - II. NE CORNER
 - 1. 4" X 4" CONCRETE MONUMENT
 - 2. TOE OF CURB 26.90 E
 - 3. BACK OF CURB 13.60 N
 - III. NW CORNER
 - 1. 4" X 4" CONCRETE MONUMENT
 - 2. SPIKE & WASHER IN POWER POLE 60.39 N.
 - 3. "X" CUT IN TOP OF CURB 17.60 NE.
 - IV. SW CORNER
 - 1. 4" X 4" CONCRETE MONUMENT
 - 2. SW CORNER CONCRETE SLAB 21.00 SE.
 - 3. NW CORNER OF CHURCH 73.76 ESE.

NOTE: ORDINANCE 2149 LIMITS ACCESS ON FOURTEENTH AVENUE. ACCESS ONTO FOURTEENTH SHALL BE LIMITED TO THE SIZE AND LOCATION SHOWN ON THIS REPLAT.