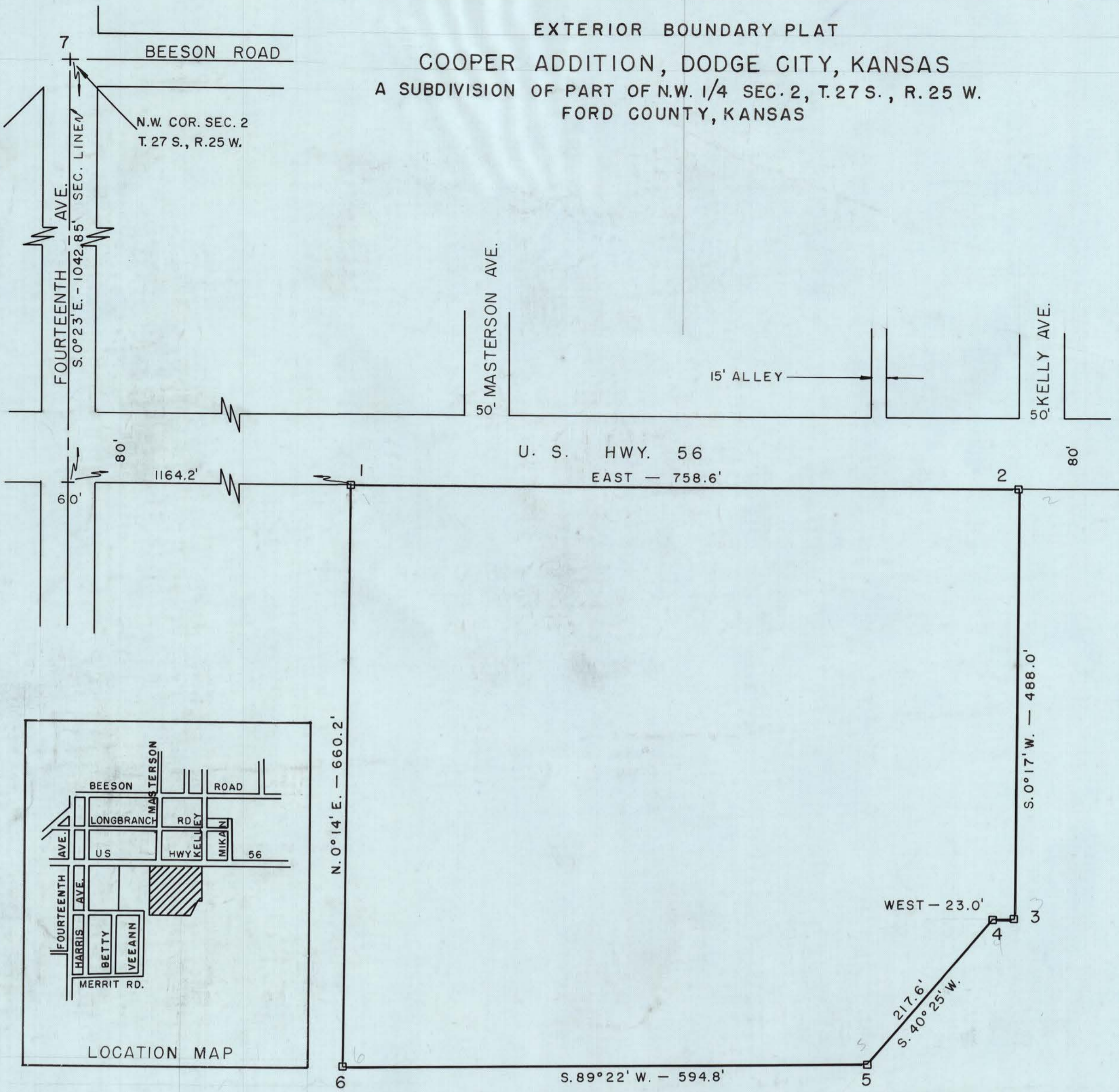




EXTERIOR BOUNDARY PLAT  
 COOPER ADDITION, DODGE CITY, KANSAS  
 A SUBDIVISION OF PART OF N.W. 1/4 SEC. 2, T.27 S., R.25 W.  
 FORD COUNTY, KANSAS



SCALE: 1" = 100'

LEGEND  
 □ = IRON PIN SET IN 4"x4" CONCRETE MONUMENT

REFERENCES:

- |  |  |
|--|--|
| <p>1. NORTHWEST CORNER SUBDIVISION</p> <ol style="list-style-type: none"> <li>1. IRON PIN IN CONCRETE AT CORNER</li> <li>2. BACK OF CURB UNITED TELEPHONE DRIVEWAY 20.5' W.</li> <li>3. BACK OF CURB UNITED TELEPHONE DRIVEWAY 14.4' S.</li> <li>4. N.W. CORNER UNITED TELEPHONE OFFICE BUILDING 114.6' S.W.</li> <li>5. AT WEST FACE FENCE CORNER POST</li> </ol> <p>2. NORTHEAST CORNER SUBDIVISION</p> <ol style="list-style-type: none"> <li>1. 4"x4" CONCRETE MONUMENT AT CORNER</li> <li>2. WEST FACE POWER POLE 0.9' E.</li> <li>3. SPIKE AND WASHER IN POWER POLE 14.8' S.</li> <li>4. WEST FACE FERGERSON STEEL SIGN POST 37.5' S.E.</li> </ol> <p>3. MOST EASTERLY SOUTHEAST CORNER SUBDIVISION</p> <ol style="list-style-type: none"> <li>1. 4"x4" CONCRETE MONUMENT AT CORNER</li> <li>2. CHAIN LINK FENCE 0.5' E.</li> <li>3. CHAIN LINK FENCE CORNER POST 1.15' S.E.</li> </ol> <p>4. 23' WEST OF MOST EASTERLY S.E. COR. SUBDIVISION</p> <ol style="list-style-type: none"> <li>1. 4"x4" CONCRETE MONUMENT AT CORNER</li> <li>2. CHAIN LINK FENCE 23.5' E.</li> <li>3. CHAIN LINK FENCE CORNER POST 23.7' S.E.</li> </ol> | <p>5. MOST SOUTHERLY SOUTHEAST CORNER SUBDIVISION</p> <ol style="list-style-type: none"> <li>1. 4"x4" CONCRETE MONUMENT AT CORNER</li> <li>2. NO PERMANENT VISABLE OBJECTS AVAILABLE FOR REFERENCE</li> </ol> <p>6. SOUTHWEST CORNER SUBDIVISION</p> <ol style="list-style-type: none"> <li>1. 4"x4" CONCRETE MONUMENT AT CORNER</li> <li>2. CHAIN LINK FENCE 66.6' N.</li> <li>3. CHAIN LINK FENCE CORNER POST 67.2' N.E.</li> <li>4. SPIKE AND WASHER IN ELM TREE 82.6' N.W.</li> </ol> <p>7. NORTHWEST CORNER SECTION 2, T.27 S., R.25 W.</p> <ol style="list-style-type: none"> <li>1. IRON PIN AT CORNER</li> <li>2. SPIKE AND WASHER IN POWER POLE 42.45' N.E.</li> <li>3. SPIKE AND WASHER IN POWER POLE 42.0' S.W.</li> <li>4. SPIKE AND WASHER IN POWER POLE 45.0' S.E.</li> <li>5. SOUTHWEST CORNER PUMP HOUSE 112.7' N.E.</li> <li>6. SOUTH RAIL RAILROAD TRACK 65.3' N.</li> <li>7. TOP FIRE HYDRANT 45.3' S.E.</li> </ol> |
|--|--|

CLOSURE COMPUTATION

| BEARING       | DISTANCE | SINE   | COSINE | NORTH<br>+ LAT. | SOUTH<br>- LAT. | EAST<br>+ DEP. | WEST<br>- DEP. |
|---------------|----------|--------|--------|-----------------|-----------------|----------------|----------------|
| EAST          | 758.6'   | 1      | 0      |                 |                 | 758.6'         |                |
| S. 0° 17' W   | 488.0'   | .00495 | .99999 |                 | 488.0'          |                | 2.42'          |
| WEST          | 23.0'    | 1      | 0      |                 |                 |                | 23.0'          |
| S. 40° 25' W. | 217.6'   | .64834 | .76135 |                 | 165.67'         |                | 141.08'        |
| S. 89° 22' W. | 594.8'   | .99994 | .01105 |                 | 6.57'           |                | 594.76'        |
| N. 0° 14' E.  | 660.2'   | .00407 | .99999 | 660.19'         |                 | 2.69'          |                |
|               |          |        |        | 660.19'         | 660.24'         | 761.29'        | 761.26'        |

REVIEWED AND APPROVED BY  
 COUNTY ENGINEER FORD COUNTY, KANSAS  
 THIS 24 DAY OF SEPTEMBER, 1973.

*B. A. Velthman*  
 B. A. VELTMAN  
 COUNTY ENGINEER

SURVEY AND PLAT BY  
 BREZINA ENGINEERING  
 DODGE CITY, KANSAS  
 THIS 20 DAY OF Sept, 1973.

*Grant A. Brezina*  
 GRANT A. BREZINA  
 REGISTERED LAND SURVEYOR



STATE OF KANSAS )  
 FORD COUNTY ) ss.  
 This instrument was filed in this office  
 on the 6 day of Nov, A.D.  
 19 73 at 4:30 o'clock P.M.  
 and duly Recorded in Book D  
 at Page 1-2

*Janice Sulick*  
 Register of Deeds

